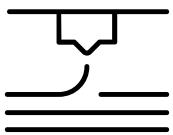




MAKESLAYERS
by **ProFORCE**

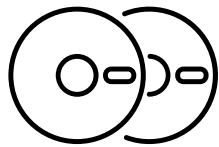
METHOD PLATFORM

LIMITLESS 3D PRINTING



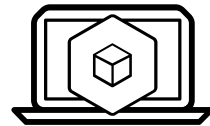
3D PRINTERS

Reliable 3D printers built for your toughest jobs



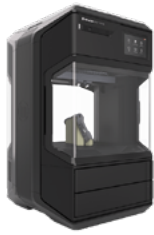
MATERIALS

Print complex mechanical assemblies with real production materials

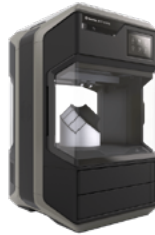


SOFTWARE

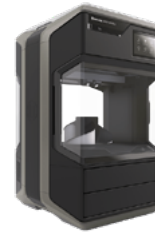
A connected software ecosystem that scales with your business.



METHOD



METHOD X



METHOD X CARBON FIBER EDITION

Included Extruders:

Model Extruder 1
Support Extruder 2

Model Extruder 1XA
Support Extruder 2XA

Model Extruder 1C
Support Extruder 2A
Support Extruder 2XA

Compatible Extruders:

Model Extruder 1
Support Extruder 2
Model Extruder 1C
LABS GEN2 Extruder

Model Extruder 1
Model Extruder 1XA
Support Extruder 2
Support Extruder 2XA
Model Extruder 1C
LABS GEN2 Extruder

Model Extruder 1
Model Extruder 1XA
Support Extruder 2A
Support Extruder 2XA
Model Extruder 1C
LABS GEN2 Extruder

Maximum VECT Chamber Temperature:

65° C

110° C

110° C

Maximum Extruder Temperature:

300° C

300° C

300° C

Build Volume Dual Material:

15.2 L x 19 W x 19.6 H cm
6.0 L x 7.5 W x 7.75 H in

15.2 L x 19 W x 19.6 H cm
6.0 L x 7.5 W x 7.75 H in

15.2 L x 19 W x 19.6 H cm
6.0 L x 7.5 W x 7.75 H in

Build volume Single Material:

19 L x 19 W x 19.6 H cm
7.5 L x 7.5 W x 7.75 H in

19 L x 19 W x 19.6 H cm
7.5 L x 7.5 W x 7.75 H in

19 L x 19 W x 19.6 H cm
7.5 L x 7.5 W x 7.75 H in

Compatible materials:

PLA
TOUGH
Nylon
PETG
PETG CF
Metal UF 316L
Nylon
Nylon CF
Nylon 12 Carbon Fiber
SEBS 95A

PLA
TOUGH
Nylon
PETG
PETG CF
Metal UF 316L
Nylon
Nylon CF
Nylon 12 Carbon Fiber
SEBS 95A

ABS
ABS-R **NEW**
ABS Carbon Fiber
ABS EC
ABS ESD
ABS Kevlar
ASA
Durabio
PC-ABS
PC-ABS FR
PC PBT
Polylite
Polymax PC
Polymax FR

PLA
TOUGH
Nylon
PETG
PETG CF
Metal UF 316L
Nylon
Nylon CF
Nylon 12 Carbon Fiber
SEBS 95A

ABS
ABS-R **NEW**
ABS Carbon Fiber
ABS EC
ABS ESD
ABS Kevlar
ASA
Durabio
PC-ABS
PC-ABS FR
PC PBT
Polylite
Polymax PC
Polymax FR

Support materials:

PVA

PVA
RapidRinse **NEW**
SR-30

PVA
RapidRinse **NEW**
SR-30